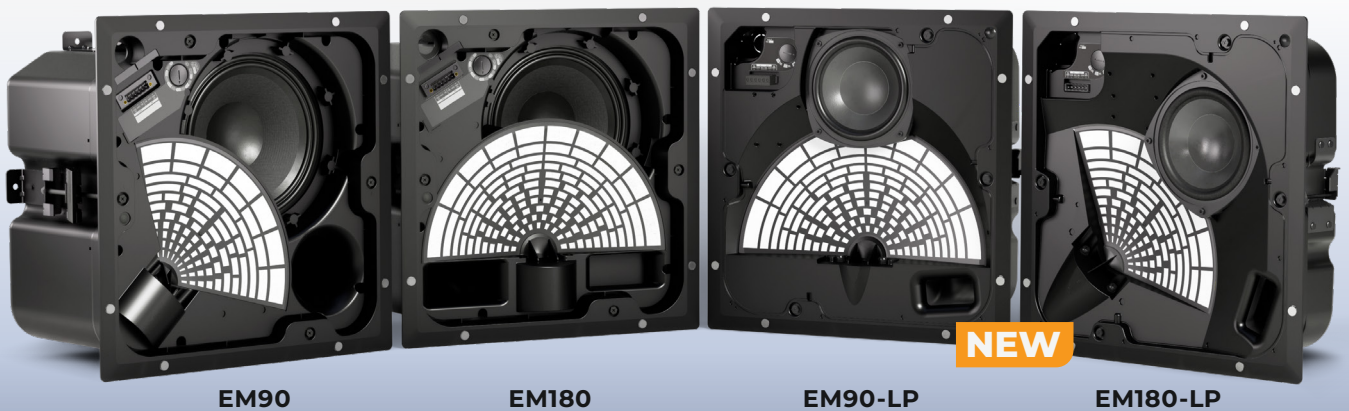


**BOSE**

PROFESSIONAL

# Surface-mount performance meets stealth-mode design.



EM90

EM180

EM90-LP

EM180-LP

## EdgeMax proprietary directional loudspeakers

Break free of the limitations of the in-ceiling loudspeaker category with Bose Professional's EdgeMax series. EdgeMax loudspeakers combine high-fidelity sound with unique directionality to deliver the coverage patterns, high SPL, and frequency response of larger surface-mount loudspeakers—but with a clean visual aesthetic.

Plus, our new LP models deliver amazing EdgeMax sound in a smaller, low-profile package for easier install and more design possibilities.

## Room-filling sound with hidden directionality.

The EdgeMax series features patented PhaseGuide® technology that directs sound asymmetrically into the room to deliver amazing performance, directionality, and voice intelligibility that puts the family in a class by itself. EdgeMax sounds like a surface-mount loudspeaker, looks like an in-ceiling loudspeaker, and directs sound asymmetrically into spaces where traditional loudspeakers can't go.

## Bring big sound to smaller spaces with new EdgeMax LP.

With a shallow backcan height of just 4 inches (10 cm) and lighter weight, our new EdgeMax LP loudspeakers are easier to install and suited for more projects, such as rooms with above-ceiling limitations. These low-profile versions also feature an 80-degree vertical coverage angle for use in rooms that have lower ceilings, such as conferencing applications.



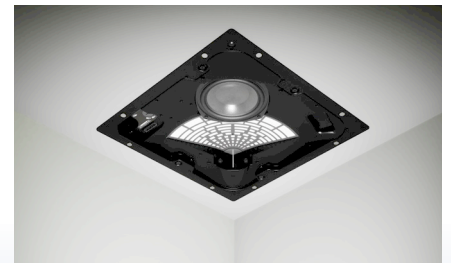
### PhaseGuide technology

Patented PhaseGuide technology evenly distributes sound asymmetrically throughout the space to ensure all listeners enjoy the same experience—regardless of their location.



### Powerful two-way sound

High-frequency compression driver and high-excursion woofer for exceptional audio quality and power. Wall boundary loading provides greater bass response.



### More sound. Fewer loudspeakers.

EdgeMax loudspeakers are engineered to be installed in corners and along ceiling edges, projecting sound inward for room-filling coverage. This means fewer units required compared to typical loudspeakers.

### Coverage, vertical

### Frequency range

### Power handling AES (long-term, peak)

### Safety compliance

### Includes

### Accessories

### Indoor use only

75° (EM90/EM180), 80° (EM90-LP/EM180-LP)

45 – 20,000 Hz

150 W, 600 W

UL1480A, UL2043

Ceiling hole template, installation guide, tile bridge, paint shield

Black grille, rough-in pan for new construction, ceiling tile replacement accessory

Learn more at [BoseProfessional.com](https://www.boseprofessional.com)

©2024 Bose Professional.

EdgeMax and QuickHold are trademarks of Tansom Post OpCo LLC. Bose and PhaseGuide are trademarks of Bose Corporation. All other trademarks are the property of their respective owners. 09/2024